



FERROSUR

Veracruz, Mexico

In September 2002, the Mexican railway group Ferrocarril del Sureste entrusted the consulting firm Grupo Proveen S.A. with the mission of controlling the specific consumption of three diesel locomotives of 3,000 hp each.

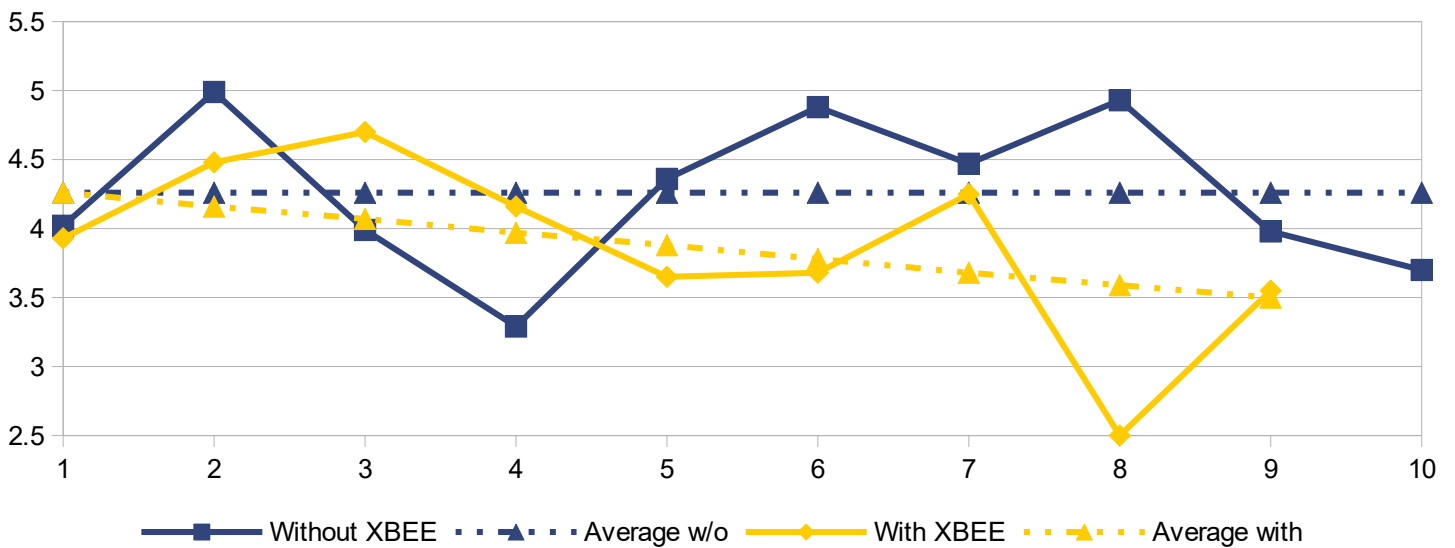
In order to reduce uncertainties, these three locomotives worked on the same line, connecting Tierra Blanca to Coatzacoalcos (301 km long). In addition, the consumption of diesel fuel was directly related to the load transported and the distance travelled. Indeed, the consumption was measured in litres per 1,000 GTK (gross ton-kilometres). Finally, it was decided that the data would be collected during the months of October and November 2002.



In January 2003, the consulting firm communicated its report which indicated a **reduction in specific fuel consumption of - 8.92%!**

Savings

First, Grupo Proveen recorded the GTK of each locomotive and established an energy efficiency index - EEI (solid lines), as well as an average (dotted lines).



	EEI: L / 1,000 GTK	Total GTK	Average GTK per trip
Without XBEE	4.26	11,656,651	1,165,665
With XBEE	3.88	12,038,400	1,337,600
Difference	Fuel consumption reduced by -8.92 %		