

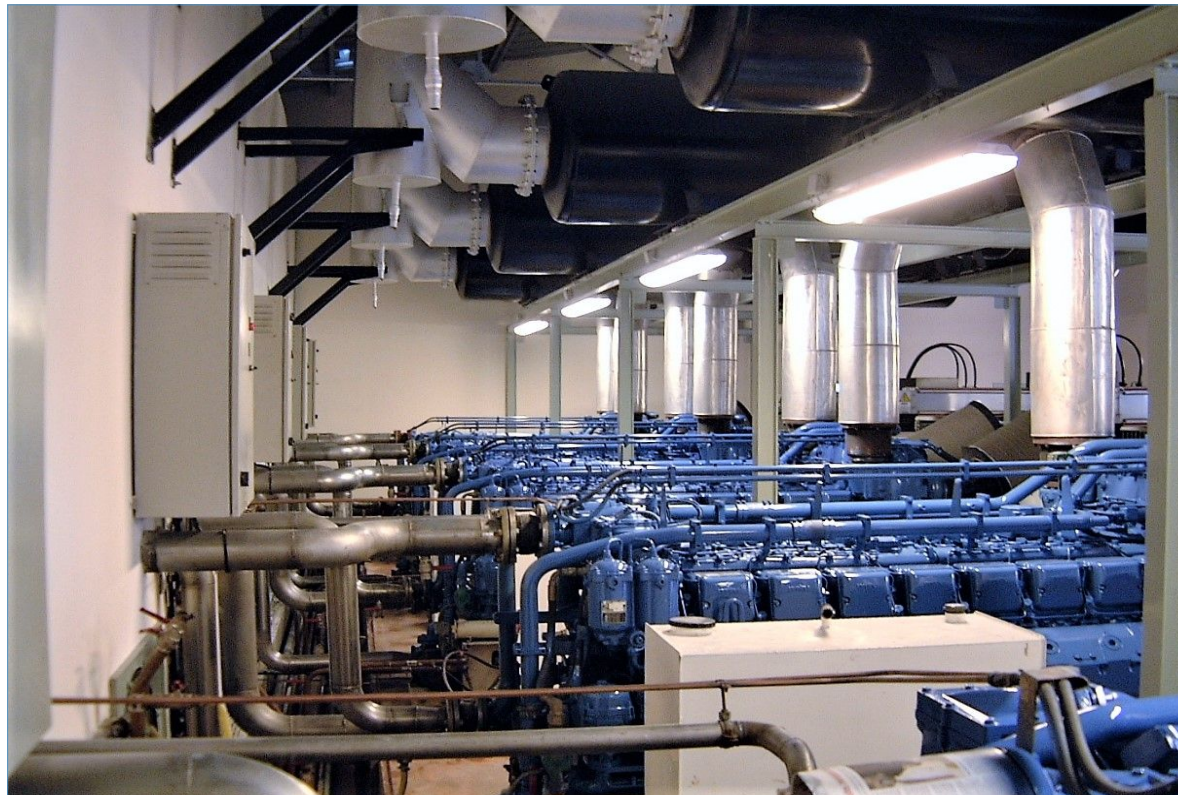


HYDELEC

Antananarivo, Madagascar

Georges Rakotomanga started to use XBEE in the electric power plant of Ambohimambola in July 2008. This power plant was managed by Hydelec Madagascar, a Malagasy corporation created in 1999 with the objective to research and implement to produce hydraulic, thermal and wind generated energy.

This power plant is located in the Eastern suburbs of Antananarivo. The main purpose of this plant is to provide production for the Jirama plants to satisfy peak demands in the Antananarivo interconnected electric network.



It is an auxiliary plant that worked about four hours per day only.

After a few months of regular use of **XBEE Enzyme Fuel Technology**, Mr. Rakotomanga has been able to observe an improvement of the generators performance by +17.73%, while fuel consumption decreased by -2.14%.

Results analysis

The nine generating sets are MTU 16V-396-TB34 and are powered with diesel fuel from a 160,000-litre storage tank.

Out of the nine units, seven operated between 65 to 100 hours, while one of them was being inspected and the last one only operated for a little over an hour. The latter therefore is not taken into account in the analysis of the results.

	Working hours	Without XBEE	With XBEE	Difference
Consumption (g/kW/h)	87.03	253.86	248.43	-2.14%
Power max (kW)		1,032.14	1,210.10	+17.23%

